

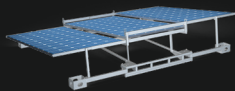
# **POWERSLIDE**

ATTACH. CONNECT. ENERGY.

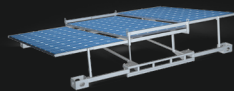
FLEXIBLE PLUG&PLAY SOLAR SOLUTION FOR 10 FEET CONTAINER



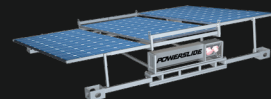
# POWERSLIDE



BASIC



COMBI



FLEX

Transport Box



Slide Frame



Solar Panels



Flex Lock Corners



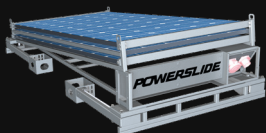
Micro-Inverters



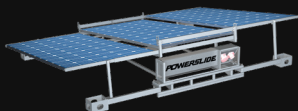
E-Box



The POWERSLIDE is a flexible solar power solution for the roofs of containerised space incl. accommodation and welfare units - especially for 10 foot size containers. The compact slide-out design allows for cost-effective transport as well as easy and fast assembly. The **BASIC** version consists of the foldable frame construction and the pre-assembled PV panels. The **COMBI** version also includes micro-inverters as well as the wiring string which can be combined with the complete Plug&Play **FLEX** version. A total of up to 5 COMBI can be combined with a FLEX to form a multiple container solution. The POWERSLIDE is also suitable as a STAND ALONE solar system with ground anchoring option or can be mounted on a trailer as a mobile PV system.



EASY TRANSPORT



FAST ASSEMBLY

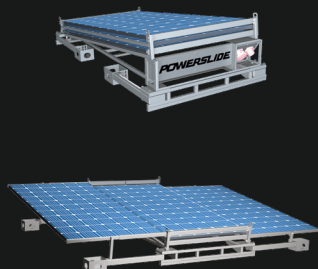


PLUG & PLAY



10" CONTAINER & STAND ALONE

## POWERSLIDE FLEX TECHNICAL INFORMATION



Solar power	from 1,65 kWp
Connectable	yes / Flex & Combi
Feeding	into the existing power grid or no grid feeding function
Power Connection	CEE 32A 400V input/output
Locking	Flexlock System
Dimensions standard	3450 x 2440 x 650 mm
Dimensions transport	1300 x 2440 x 650 mm
Total weight	approx. 230 kg
Monitoring	via App



### HARTL ENERGY GMBH

Pem-Strasse 2 / 4310 Mauthausen / Austria  
T +43 7238 29520 / office@hartl-energy.com  
www.hartl-energy.com