



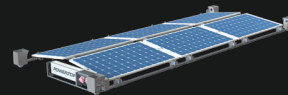
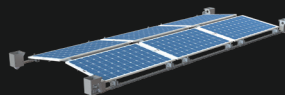
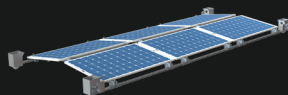
POWER TOP

ATTACH. CONNECT. ENERGY.

FLEXIBLE PLUG&PLAY SOLAR SOLUTION FOR CONTAINERS



POWERTOP



BASIC

COMBI

FLEX

Transport Box



Flex Frame



Solar Panels



ISO-Corners



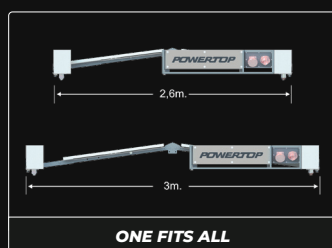
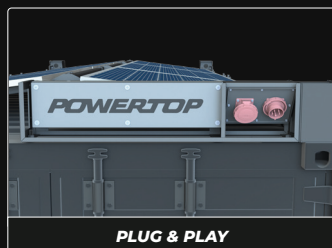
Micro-Inverters



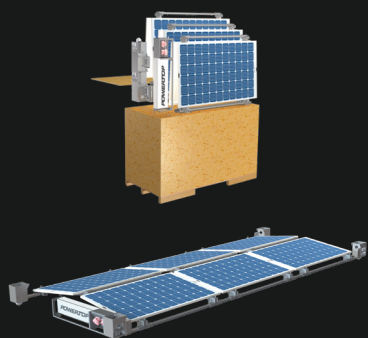
E-Box



The POWERTOP is the most flexible OUT OF THE BOX solar solution for the roof of containerised space incl. accommodation and welfare units. The ONE FITS ALL Design enables easy installation on different container sizes. The robust ISO-Corners will still allow the entire container to be lifted through the POWERTOP whilst connected. The **BASIC** version consists of the flexible frame and preassembled PV panels. The **COMBI** version also includes micro-inverters as well as the wiring string which can be combined with the complete Plug&Play **FLEX** version. A total of up to 5 COMBI can be combined with a FLEX to form a multiple container solution.



POWERTOP FLEX TECHNICAL INFORMATION



Solar power	from 2,25 kWp
Connectable yes	yes / Flex & Combi
Feeding	into the existing power grid or no grid feeding function
Power Connection	CEE 32A 400V input/output
Locking	ISO-Twistlock
Dimensions standard	6060 x 2440 x 280 mm
Abmessungen teleskopiert	6060 x 3000 x 280 mm
DimensionsTransport Box	2.158 x 1090 x 1.405mm
Total weight	approx. 400 kg
Crain able	yes / with Container up to 5 t
Monitoring	via App



HARTL ENERGY GMBH

Pem-Strasse 2 / 4310 Mauthausen / Austria
T +43 7238 29520 / office@hartl-energy.com
www.hartl-energy.com